



**SGP** The GEF  
Small Grants  
Programme



GEF-SGP OP7

# LANDSCAPE *Klang Valley* STRATEGY



# Scope of Work



**SGP** The GEF  
Small Grants  
Programme



## Focus of GEF OP7:

- Participatory conservation  !
- Land restoration  !
- Climate change mitigation
- Clean energy solutions
- Sustainable livelihood

**Project Period : 3 years**

April 2023 – January 2026

# Overall Objective

To enable community organizations to take collective action for adaptive landscape management in building socio-ecological resilience in the Klang Valley, Peninsular Malaysia for global environmental benefits and sustainable development



# GEF OP-7 Core Indicators

## MALAYSIA

## KLANG VALLEY

1. Area of land restored
1. Area of landscapes under improved practices (exclude PAs)
1. GHG emissions mitigated (metric tons of tCO<sub>2</sub>e)
1. Number of direct beneficiaries (1:1 ratio of female to male)

1,000 hectares

43,000 hectares

341,540 tCO<sub>2</sub>e

10,000 beneficiaries

400 hectares

9,000 hectares

150 tCO<sub>2</sub>e + 260,000  
tCO<sub>2</sub>e  
(with Crocker Range +  
Baram)

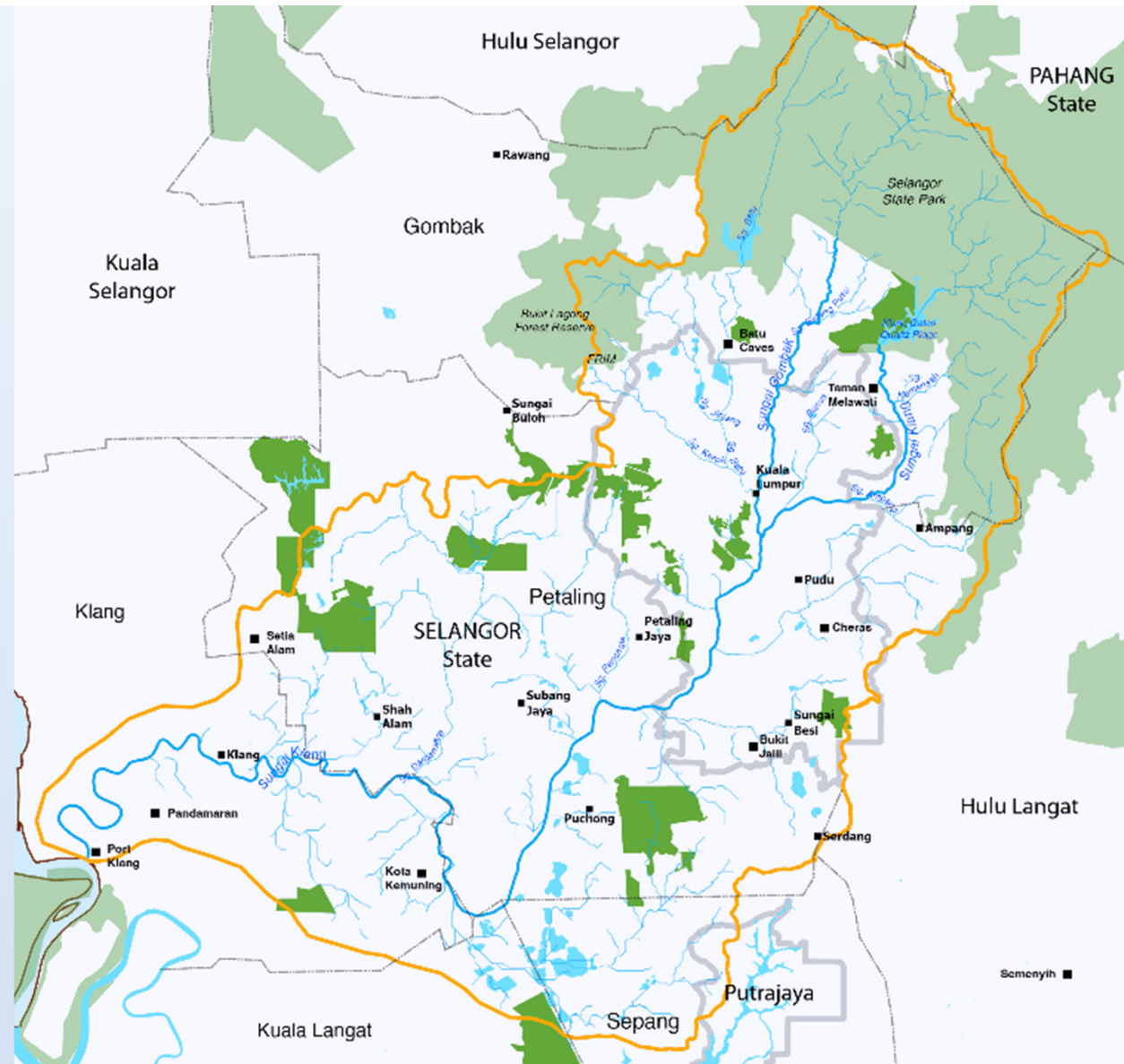
~10,000 beneficiaries

# KLANG VALLEY

Gombak – KL – Petaling – Shah Alam

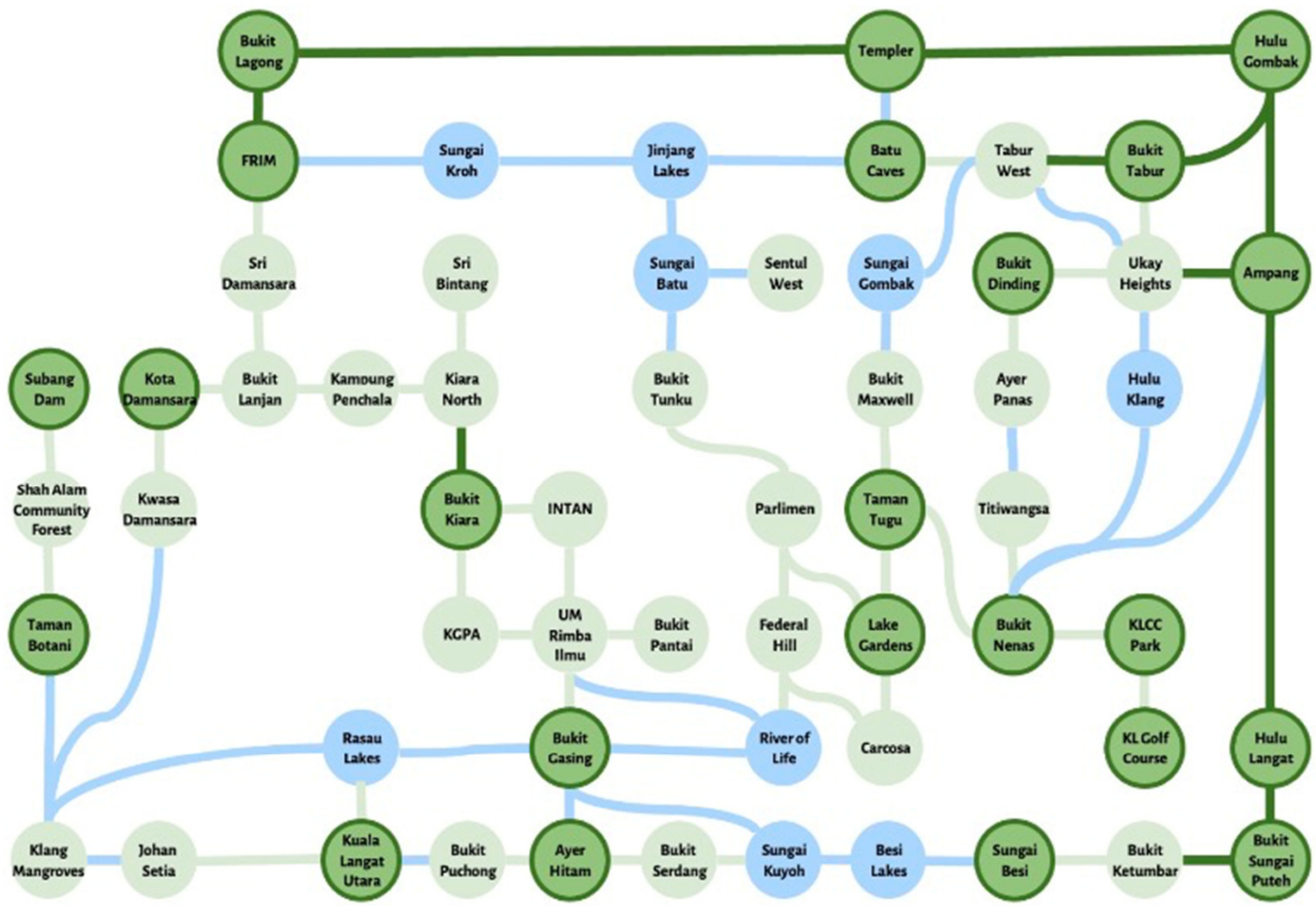


- Participatory conservation
- Rehabilitate degraded land
- Sustainable forest & resource management
- Green connectivity





# DRAFT Landscape Strategy



**Key**

- Protected urban green space\*
- Unprotected urban green space
- Adjoining/protected corridor
- Unprotected land-based corridor
- Unprotected riparian corridor

\* Gazetted protected areas, recreational reserves and similarly safe green space.

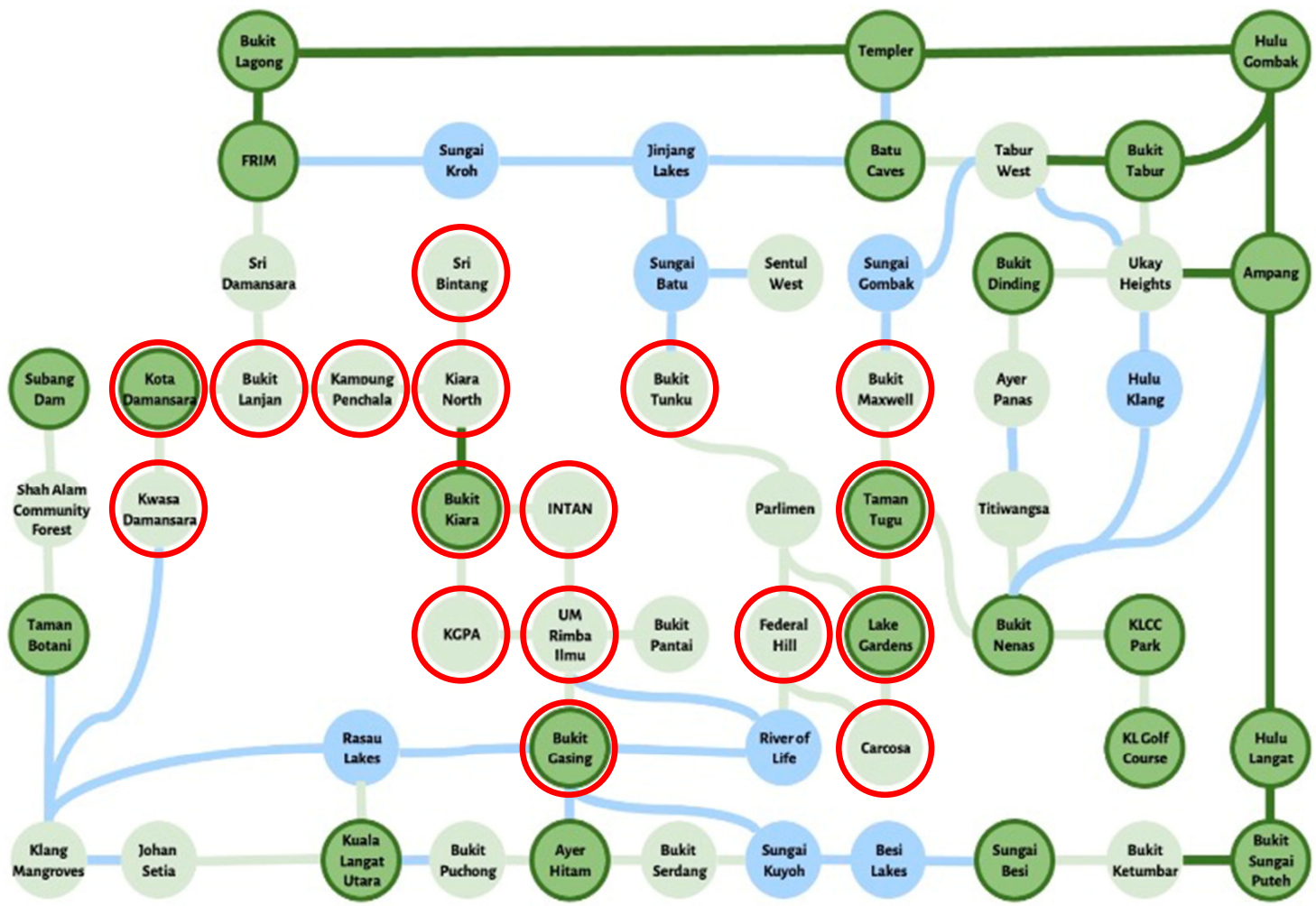
**Central Forest Spine (CFS) network link:**

Banjaran Utama Forest Complex (Lentang Forest Patch)

**RUGS**  
Rantaian Urban Green Spaces  
Klang Valley Green Connector

Potential linkages between the green spaces and waterways in the Klang Valley landscape.

# DRAFT Landscape Strategy



**Key**

- Protected urban green space\*
- Unprotected urban green space
- Adjoining/protected corridor
- Unprotected land-based corridor
- Unprotected riparian corridor

\* Gazetted protected areas, recreational reserves and similarly safe green space.

**Central Forest Spine (CFS) network link:**

**RUGS**  
Rantaian Urban Green Spaces  
Klang Valley Green Connector

Potential linkages between the green spaces and waterways in the Klang Valley landscape.

# Landscape assessment

## Methodologies

1. GIS

% of tree cover between forested areas within a 1km x 1km quadrat  
-> identify quadrants with optimal balance of tree cover, land use and other factors

1. Site visit

Observe land use, existing green cover and potential for rehabilitation and connectivity

1. Biodiversity survey

Flora and fauna species inventory; and identify keystone species  
-> data will aid landscape rehabilitation process

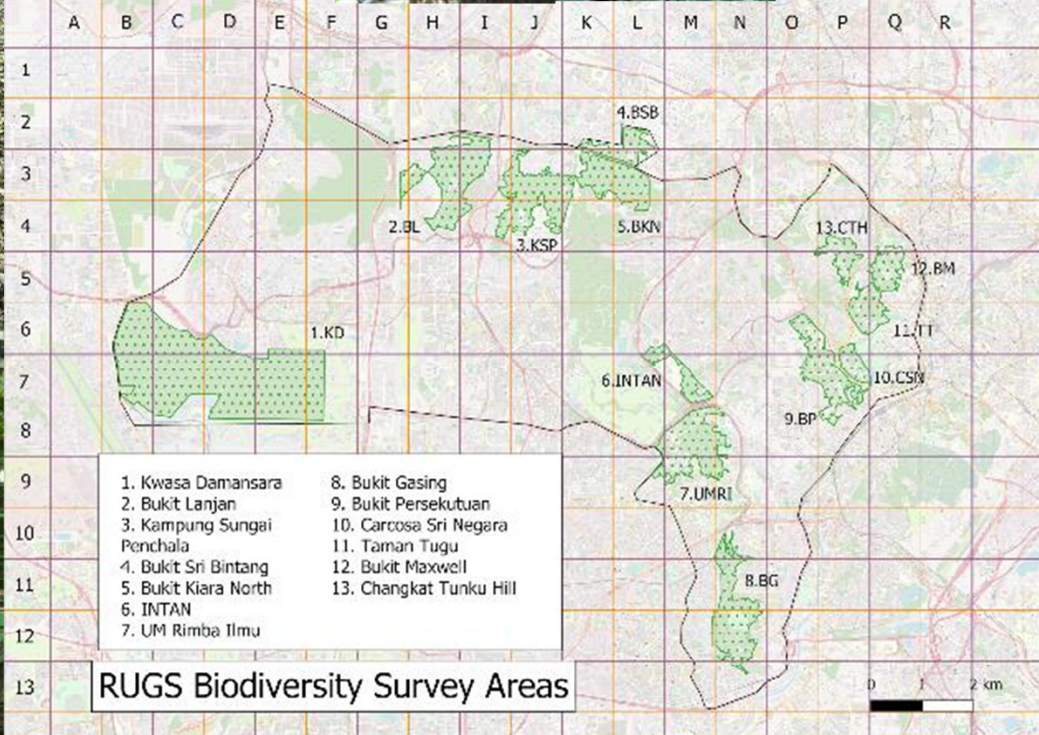
1. Literature review

Consolidate information from past baseline reports (e.g. biodiversity, land use, demography and socio-economics, etc.)

1. Consultation

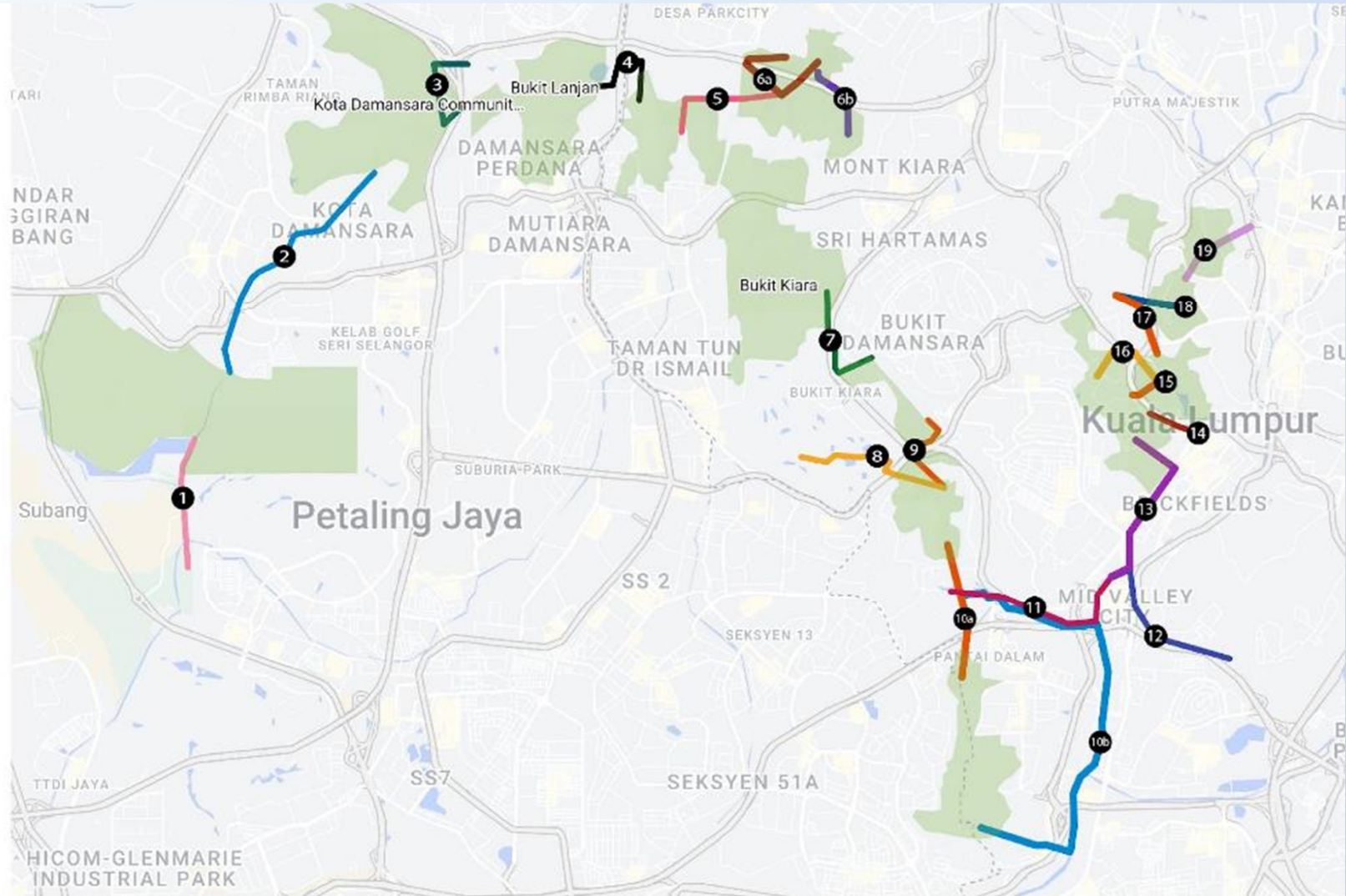
Consultation with relevant stakeholders (e.g. DBKL, DWNP, Segambut MP, and civil society actors)







- 1 Kwasa Damansara to Sungai Damansara
- 2 KDCF to Kwasa Damansara
- 3 Bukit Lanjan to KDCF
- 4 Kampung Sungai Penchala to Bukit Lanjan
- 5 Bukit Kiara North to Kampung Sungai Penchala
- 6a Bukit Kiara North to Sri Bintang - Culverts 1 & 2
- 6b Bukit Kiara North to Sri Bintang - Culvert 3
- 7 INTAN to Bukit Kiara
- 8 UM Rimba Ilmu to Kiara (KPGA)
- 9 UM Rimba Ilmu to INTAN
- 10a UM Rimba Ilmu to Bukit Gasing - Federal Highway
- 10b UM Rimba Ilmu to Bukit Gasing - Sungai Klang
- 11 Mid Valley to UMS Varsity Lake
- 12 Mid Valley to Bukit Seputeh
- 13 Federal Hill to Brickfields to Mid Valley
- 14 Federal Hill to Muzium Negara
- 15 Federal Hill to Carcosa Sri Negara to Lake Gardens
- 16 Federal Hill to Ledang to Lake Gardens
- 17 Parliament to Lake Gardens
- 18 Parliament to Taman Tugu
- 19 Taman Tugu to JPSM to Sungai Gombak/Batu



# Landscape Strategy and Action Plan

## INDICATORS

1. Area of land restored
1. Area of landscapes under improved practices (exclude PAs)
1. GHG emissions mitigated (metric tons of tCO<sub>2</sub>e)
1. Number of direct beneficiaries (1:1 ratio of female to male)

## TARGET

400 hectares

9,000 hectares

150 tCO<sub>2</sub>e + 260,000  
tCO<sub>2</sub>e  
(with Crocker Range +  
Baram)

~10,000 beneficiaries

# Landscape Strategy and Action Plan

1. Area of land restored

400 hectares

- Rehabilitation of degraded landscape
  - Reforestation and vegetation restoration
- Improved landscape management (e.g. peatland & waterways)
  - Erosion control and soil stabilization
  - Avoided deforestation or degradation
- Physical intervention and enhancement
  - Wildlife corridors

# Landscape Strategy and Action Plan

2. Area of landscapes under improved practices (exclude PAs)

8,000 hectares

- Strengthened legal protection over existing and proposed green spaces
  - New subsidiary legislation to prevent downgrading, de-gazettement
  - Co-management of green spaces : private-public and civil society partnership
- Community participation
  - Urban farming, rooftop gardens, urban forestry
- Sustainable land management in production systems
  - Land use policies and regulations that promote sustainable practices
  - Agroforestry
- Sound management plan and masterplans
  - Climate-resilient landscaping
  - Holistic soil management : Cover cropping



# Landscape Strategy and Action Plan

3. GHG emissions mitigated (metric tons of tCO<sub>2</sub>e)

150 tCO<sub>2</sub>e + 260,000 tCO<sub>2</sub>e

- Energy efficiency (EE)
  - Retrofit building with EE technologies (e.g. LED lighting, high-efficiency appliances)
  - Diversification of energy sources (hybrid)
  - Community EE programs : incentivize energy saving measures
- Renewable energy (RE)
  - Grid modernization: Off-grid solar combined cooling, heating and power (CCHP)
  - Methane capture and utilization system in landfills
- Green building design
- Carbon sequestration
  - Cap-and-trade system to incentivize GHG emissions
- Sustainable transportation

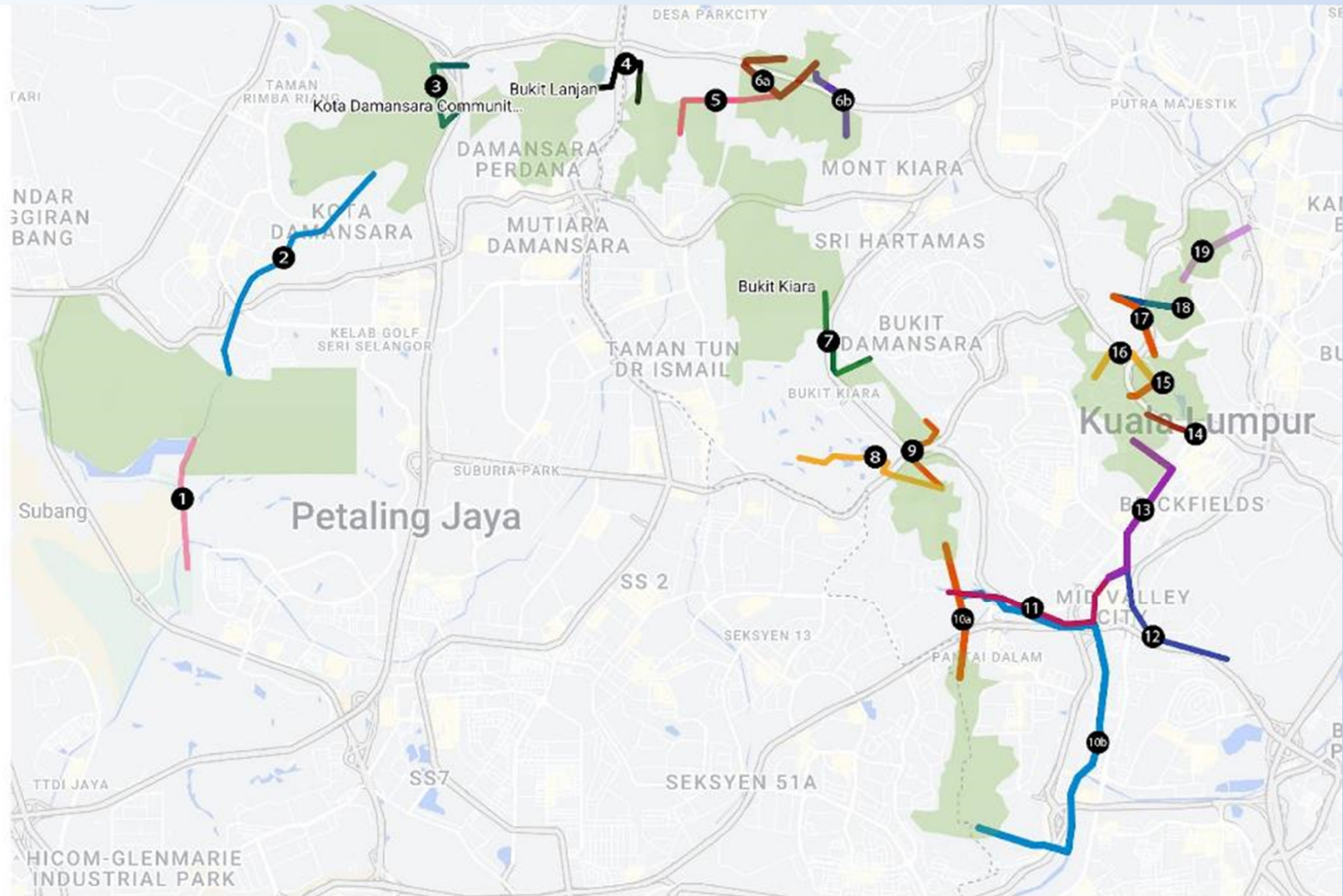
# Landscape Strategy and Action Plan

4. Number of direct beneficiaries (1:1 ratio of female to male)

~10,000 beneficiaries

- Community engagement
  - Participatory mapping and decision-making
  - Citizen science initiatives
- Capacity building
  - Workshops, training and education on sustainable land management practices and pertinent skills
- Collaborative and gender-inclusive planning
  - Tailored outreach and engagement to different community groups
- Access to resources
  - Financial, technical, knowledge products, markets

- 1 Kwasa Damansara to Sungai Damansara
- 2 KDCF to Kwasa Damansara
- 3 Bukit Lanjan to KDCF
- 4 Kampung Sungai Penchala to Bukit Lanjan
- 5 Bukit Kiara North to Kampung Sungai Penchala
- 6a Bukit Kiara North to Sri Bintang - Culverts 1 & 2
- 6b Bukit Kiara North to Sri Bintang - Culvert 3
- 7 INTAN to Bukit Kiara
- 8 UM Rimba Ilmu to Kiara (KPGA)
- 9 UM Rimba Ilmu to INTAN
- 10a UM Rimba Ilmu to Bukit Gasing - Federal Highway
- 10b UM Rimba Ilmu to Bukit Gasing - Sungai Klang
- 11 Mid Valley to UMS Varsity Lake
- 12 Mid Valley to Bukit Seputeh
- 13 Federal Hill to Brickfields to Mid Valley
- 14 Federal Hill to Muzium Negara
- 15 Federal Hill to Carcosa Sri Negara to Lake Gardens
- 16 Federal Hill to Ledang to Lake Gardens
- 17 Parliament to Lake Gardens
- 18 Parliament to Taman Tugu
- 19 Taman Tugu to JPSM to Sungai Gombak/Batu





# *Ecological connection*



Increase tree cover



Wildlife underpass / viaduct





# *Physical connection*



Wildlife bridge



Pathways



Pedestrian bridge





# Urban *Design*



Green buildings



Infrastructure - gardens



Rooftop gardens





# Protection of existing green spaces



**Bukit Dinding, Bukit TM Wangsa Maju to be considered for forest reserve gazettement**



**NGOs want govt to gazette Bukit Persekutuan as a heritage site**

**Protecting Klang Gates Quartz Ridge**

March 21, 2023 @ 12:15pm



**Selangor to carry out Bukit Cherakah Forest Reserve degazettement to avoid lawsuit**



**NORON**  
14:20pm, 04 Sep 2022  
7:53 PM MYT



**Freeze Bukit Persekutuan development, groups tell Putrajaya after Batang Kali tragedy**



**Reinstate Taman Rimba Kiara as city park, TTDI folk tell Putrajaya after apex court win**



# Next Step:

## STAKEHOLDER ENGAGEMENT

*Multi-stakeholder Landscape Governance Platform*



### LOCAL CBOs

- Develop and implement project interventions



### NGOs

- Provide technical assistance
- Deliver training and other capacity building support



### GOVERNMENT

- Provide technical assistance
- Advocate for policy reform
- Facilitate community development and conservation initiatives



### ACADEMIC INSTITUTION

- Provide technical assistance in introduction of innovative approaches



### PRIVATE ENTERPRISES

- Establish partnerships in collaborative management
- Participate in landscape approaches

# Capacity Building Plan



PROJECT PLANNING  
AND MANAGEMENT

TECHNICAL SKILLS  
DEVELOPMENT

FINANCIAL  
SUSTAINABILITY

POLICY AND  
ADVOCACY

EFFICIENT STAKEHOLDER  
ENGAGEMENT

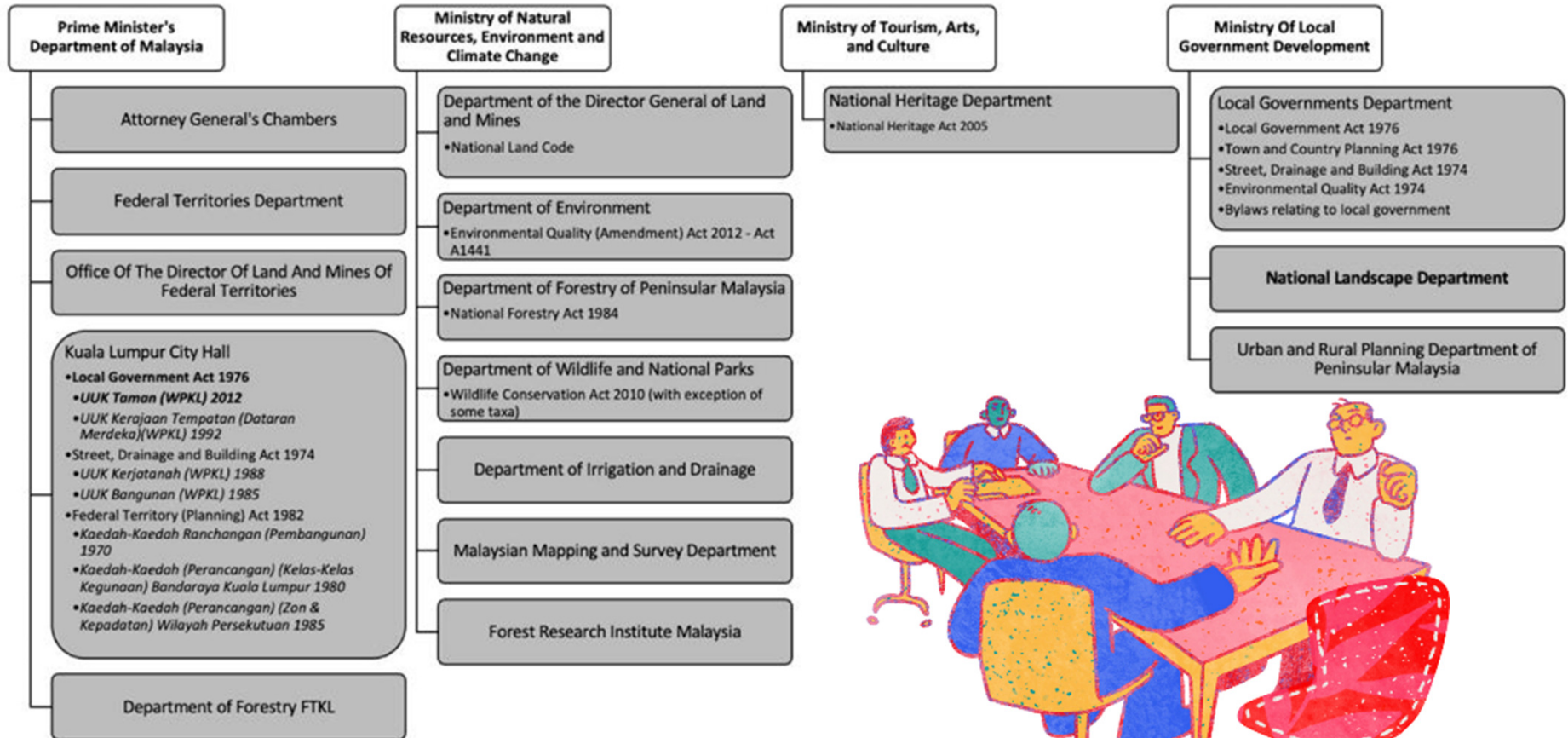
LANDSCAPE  
MANAGEMENT

MONITORING AND  
EVALUATION (M&E)

KNOWLEDGE SHARING  
& COMMUNICATION

KNOWLEDGE  
MANAGEMENT

# Delivering Advocacy and Policy Reform





# Monitoring and Evaluation Plan

## Monitoring tools:

- Task checklist and guide
  - SWOT Analysis
- Reporting framework

## Frequency:

- Annual
- Midterm
- End of project

## Workshop

Guide in reporting standards

**Internal Review**  
Progress tracking & analysis



# Knowledge Communication Plan



## CONSOLIDATE

- Extract information

## ESTABLISH

- Build website and social media platforms
- Prepare print materials
- Journal articles

## AWARENESS

- Social media campaign
- Press conference
- Outreach events
- Journal publication

## ENGAGEMENT

- Update website content
- Update social media
- Regular journal publication
- Engagement with schools
- Merchandise